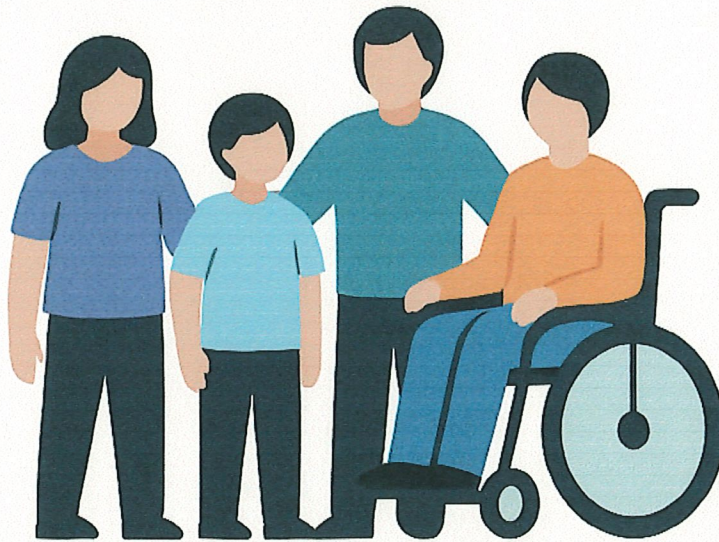


# **SUPPORT GROUP**

**for parents of children and  
adults with disabilities**



**in Clarion and surrounding counties**

**Meetings take place the first Thursday of  
each month from 6-8 at Cornerstone  
Church of Clarion**

**3655 East End Road, Shippensburg PA 16254**

**The Arc of Clarion will be available to provide an  
activity and supervision for individuals while  
parents are in the meeting**

**For more information contact Sandy and Mike Beary  
by email: [mikesandybeary@gmail.com](mailto:mikesandybeary@gmail.com)**